



COMPASS

Queens Luxury Report

August 25 - 31, 2025, Residential Contracts \$1.25M+

Photo: [12-16 30th Ave, Unit 201](#)

The Queens luxury real estate market, defined as all properties priced \$1.25M and above, saw 14 contracts signed this week, made up of 6 condos, and 8 houses. The previous week saw 31 deals. For more information or data, please reach out to a Compass agent.

\$1,816,920

Average Asking Price

\$1,398,500

Median Asking Price

\$1,032

Average PPSF

1%

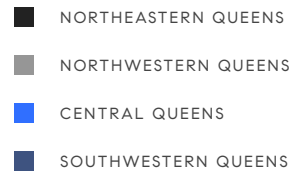
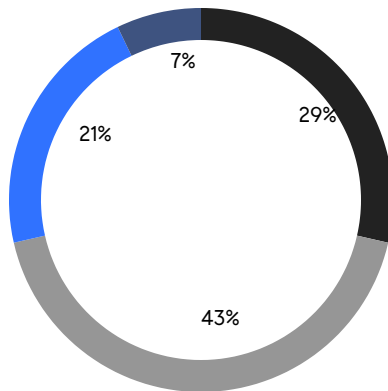
Average Discount

\$25,436,876

Total Volume

75

Average Days On Market



6

Condo Deal(s)

0

Co-op Deal(s)

8

Single-Family Deal(s)

\$1,595,313

Average Asking Price

\$0

Average Asking Price

\$1,983,125

Average Asking Price

\$1,470,000

Median Asking Price

\$0

Median Asking Price

\$1,398,500

Median Asking Price

\$1,449

Average PPSF

\$719

Average PPSF

1,117

Average SqFt

3,033

Average SqFt

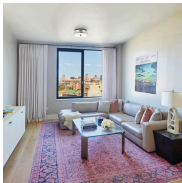


3 Point Crescent

Whitestone

Contract Signed

Type	House	Price	\$5,888,000	Sq. Ft.	10,500	Beds	7
DOM	107	Initial	\$6,250,000	PPSF	\$561	Baths	9.5

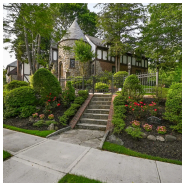


22-18 Jackson Avenue, Unit 601

Long Island City

Contract Signed

Type	Condo	Price	\$2,350,000	Sq. Ft.	1,497	Beds	3
DOM	-	Initial	\$2,350,000	PPSF	\$1,570	Baths	2

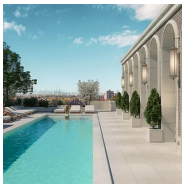


80-67 222nd Street

Oakland Gardens

Contract Signed

Type	House	Price	\$1,735,000	Sq. Ft.	2,168	Beds	4
DOM	64	Initial	\$1,880,000	PPSF	\$801	Baths	2



78-29 Austin Street, Unit 410

Forest Hills

Contract Signed

Type	Condo	Price	\$1,653,988	Sq. Ft.	1,423	Beds	3
DOM	160	Initial	\$1,653,988	PPSF	\$1,163	Baths	2.5



11-36 45th Road, Unit 509A

Long Island City

Contract Signed

Type	Condo	Price	\$1,600,000	Sq. Ft.	909	Beds	2
DOM	3	Initial	\$1,600,000	PPSF	\$1,761	Baths	2



69-43 260th Place

Glen Oaks

Contract Signed

Type	House	Price	\$1,400,000	Sq. Ft.	2,455	Beds	3
DOM	40	Initial	\$1,488,800	PPSF	\$571	Baths	2

Compass is a licensed real estate broker and abides by Equal Housing Opportunity laws. All material presented herein is intended for informational purposes only. Information is compiled from sources deemed reliable but is subject to errors, omissions, changes in price, condition, sale, or withdrawal without notice. No statement is made as to the accuracy of any description. All measurements and square footages are approximate. This is not intended to solicit property already listed. Nothing herein shall be construed as legal, accounting or other professional advice outside the realm of real estate brokerage.



68-40 Manse Street

Forest Hills

Contract Signed

Type	House	Price	\$1,399,000	Sq. Ft.	1,616	Beds	3
DOM	28	Initial	\$1,399,000	PPSF	\$866	Baths	1



81-11 64th Road

Middle Village

Contract Signed

Type	House	Price	\$1,398,000	Sq. Ft.	2,208	Beds	4
DOM	19	Initial	\$1,398,000	PPSF	\$634	Baths	3



7802 149th Avenue

Lindenwood

Contract Signed

Type	House	Price	\$1,389,000	Sq. Ft.	2,000	Beds	3
DOM	87	Initial	\$1,389,000	PPSF	\$695	Baths	2

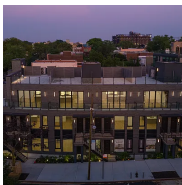


26445 60th Road

Little Neck

Contract Signed

Type	House	Price	\$1,368,000	Sq. Ft.	1,836	Beds	4
DOM	63	Initial	\$1,450,000	PPSF	\$746	Baths	3

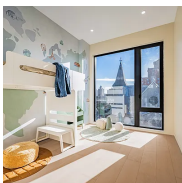


21-31 Shore Boulevard, Unit 3D

Astoria

Contract Signed

Type	Condo	Price	\$1,340,000	Sq. Ft.	1,114	Beds	2
DOM	70	Initial	\$1,340,000	PPSF	\$1,203	Baths	2



31-16 21st Street, Unit PH2B

Astoria

Contract Signed

Type	Condo	Price	\$1,328,888	Sq. Ft.	886	Beds	2
DOM	102	Initial	\$1,328,888	PPSF	\$1,500	Baths	2

Compass is a licensed real estate broker and abides by Equal Housing Opportunity laws. All material presented herein is intended for informational purposes only. Information is compiled from sources deemed reliable but is subject to errors, omissions, changes in price, condition, sale, or withdrawal without notice. No statement is made as to the accuracy of any description. All measurements and square footages are approximate. This is not intended to solicit property already listed. Nothing herein shall be construed as legal, accounting or other professional advice outside the realm of real estate brokerage.



31-16 21st Street, Unit PH2C

Astoria

Contract Signed

Type	Condo	Price	\$1,299,000	Sq. Ft.	868	Beds	2
DOM	216	Initial	\$1,299,000	PPSF	\$1,497	Baths	2



20-56 26th Street

Astoria

Contract Signed

Type	House	Price	\$1,288,000	Sq. Ft.	1,480	Beds	3
DOM	12	Initial	\$1,288,000	PPSF	\$871	Baths	1

Compass is a licensed real estate broker and abides by Equal Housing Opportunity laws. All material presented herein is intended for informational purposes only. Information is compiled from sources deemed reliable but is subject to errors, omissions, changes in price, condition, sale, or withdrawal without notice. No statement is made as to the accuracy of any description. All measurements and square footages are approximate. This is not intended to solicit property already listed. Nothing herein shall be construed as legal, accounting or other professional advice outside the realm of real estate brokerage.